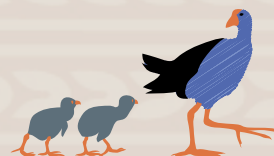


What is a PAT?



- PATs are multi-choice tests for students in Years 3-10
- PATs are made locally by NZCER, with a strong focus on how Aotearoa students learn in our unique context
- There are PATs for reading, writing, maths, reading comprehension, vocabulary, listening comprehension, and punctuation & grammar
- PATs provide a point-in-time snapshot of how students are doing
- Over a longer period of sitting PATs, they show overall student progress

How are PATs used?

- PATs are used to help teachers, parents and whānau understand how students are learning and progressing as well as to inform teaching and learning
- They should be used in a low-stakes environment, and no more than twice a year



Understanding PAT scores



- Every PAT has a scale, which shows how students have scored on the test, including the average score
- The scale is based on a representative sample, accurately reflecting the national student population
- PAT reports show where an individual student's score sits on this scale
- Because PAT scores are a snapshot, they should always be taken alongside teacher observations, in-classroom learning, your own input and the input of your child.



For more information on PATs, check out our [“Understanding PATs” Q+A resource here.](#)